

AVEIRO TECH CITY LIVING LAB

DIGITAL TWIN

Bernardo Pinto · Filipe Obrist · José Mendes · Mariana Perna · Rafaela Dias



Advisors: Susana Sargento, Pedro Rito, Filipe Cabral Pinto, Duarte Raposo

OUR TEAM



Bernardo Pinto



Filipe Obrist



José Mendes



Mariana Perna



Rafaela Dias

TABLE OF CONTENTS

01

Context

Work Done

04

02

State of Art

Prototype / Demo

05

03

Architecture

Future Work

06



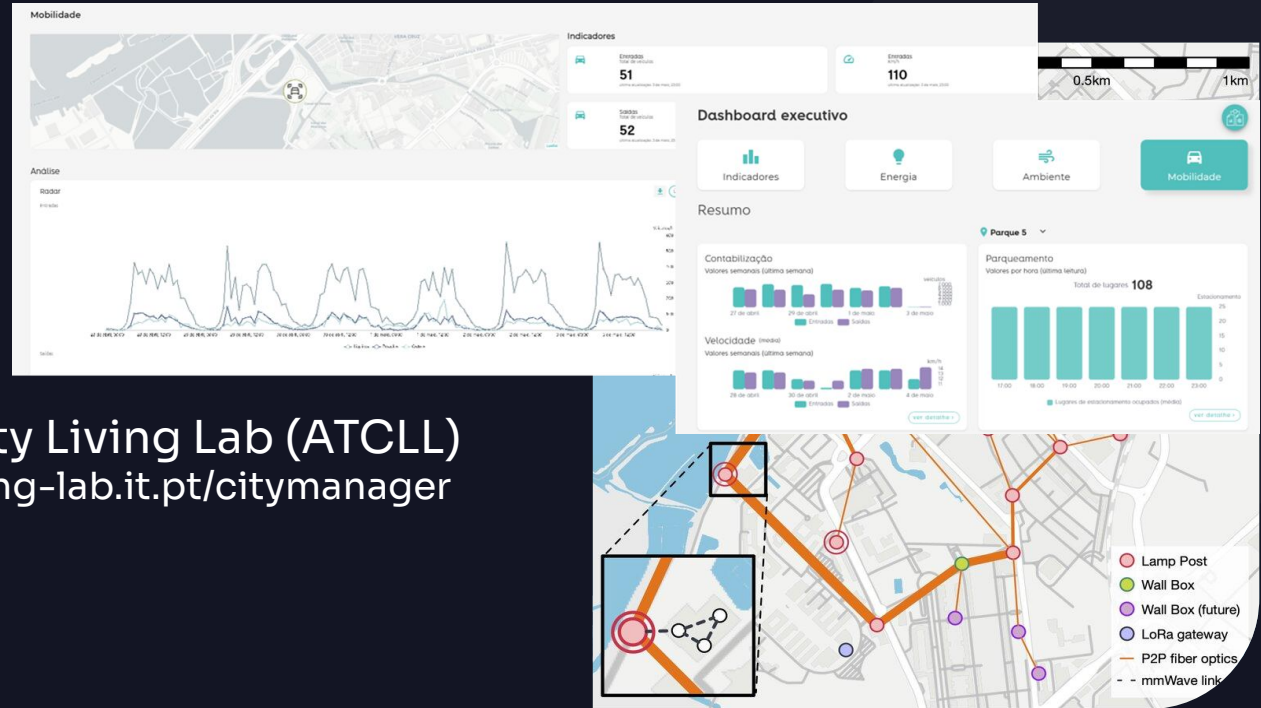
01

CONTEXT



CONTEXT

- ★ SmartCities
- ★ Digital Twin
- ★ Aveiro Tech City Living Lab (ATCLL)
<https://aveiro-living-lab.it.pt/citymanager>
- ★ Live!Urban



02

STATE OF ART



STATE OF ART

Building a Motorway Digital Twin in SUMO

Real-Time Simulation of
Continuous Data Stream from
Traffic Counters

<https://ieeexplore.ieee.org/document/9899796>

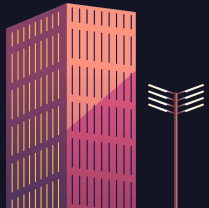
Smart Mobility Digital Twin for Automated Driving

Design and Proof-of-Concept

<https://ieeexplore.ieee.org/document/10200728>

Efficient Procedure of Building University Campus Models for Digital Twin Simulation

<https://ieeexplore.ieee.org/document/9913679>

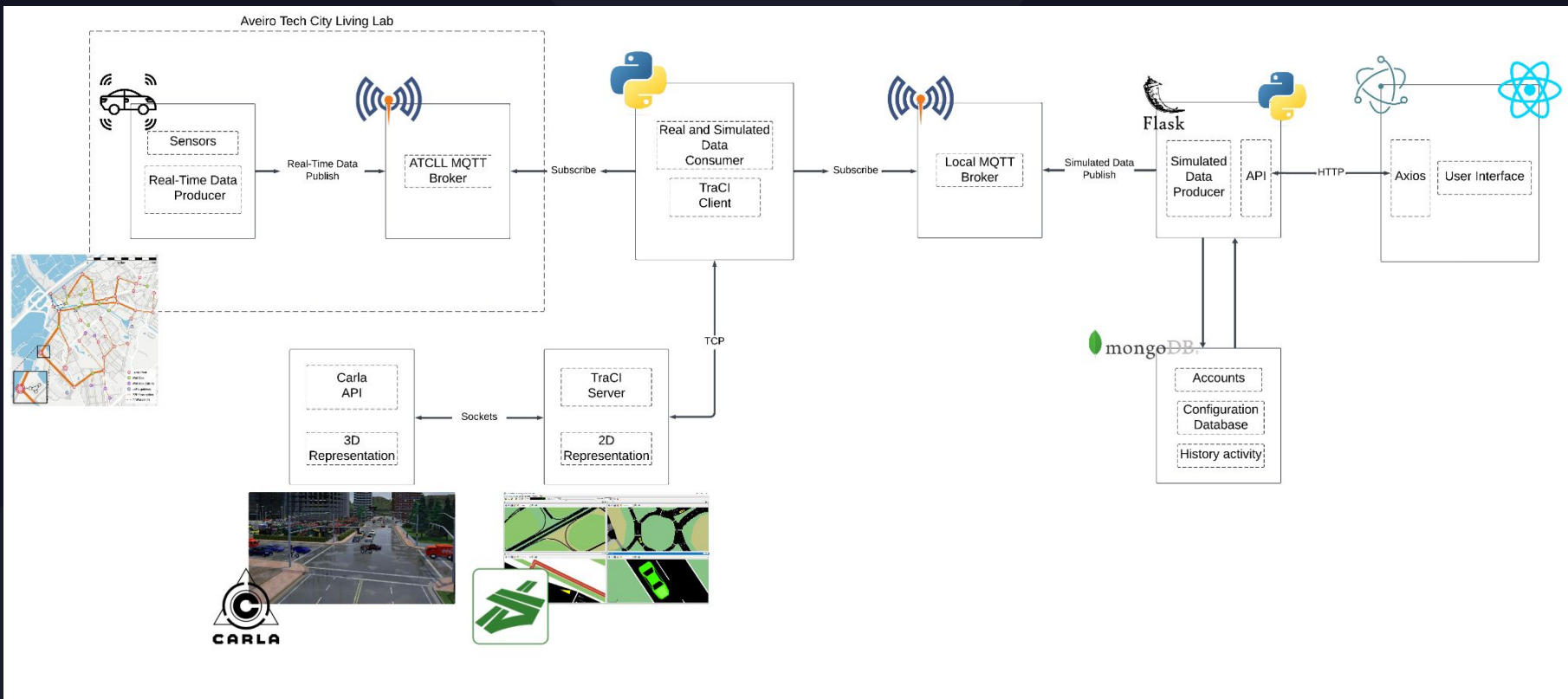


03

ARCHITECTURE

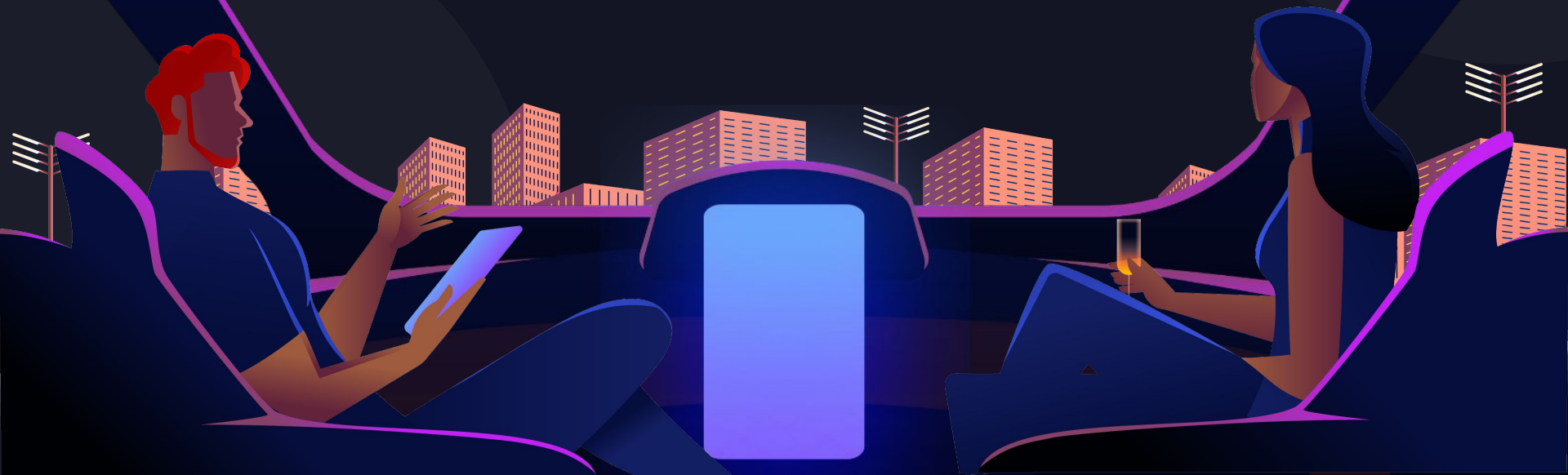


ARCHITECTURE



04

WORK DONE



MAP GENERATION

1. .osm export (<https://www.openstreetmap.org>)
2. Map cleaning with JOSM
3. Creation of the header with georeferencing for the .xodr *
4. Creation of the .xodr from .osm *
5. From .xodr create the .net.xml file

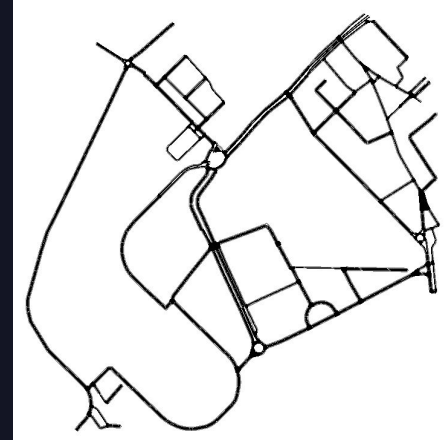
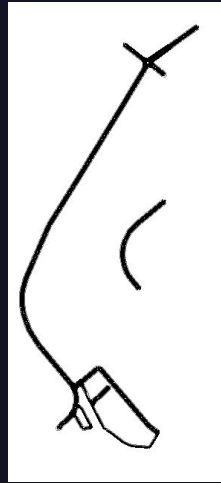


.net.xml

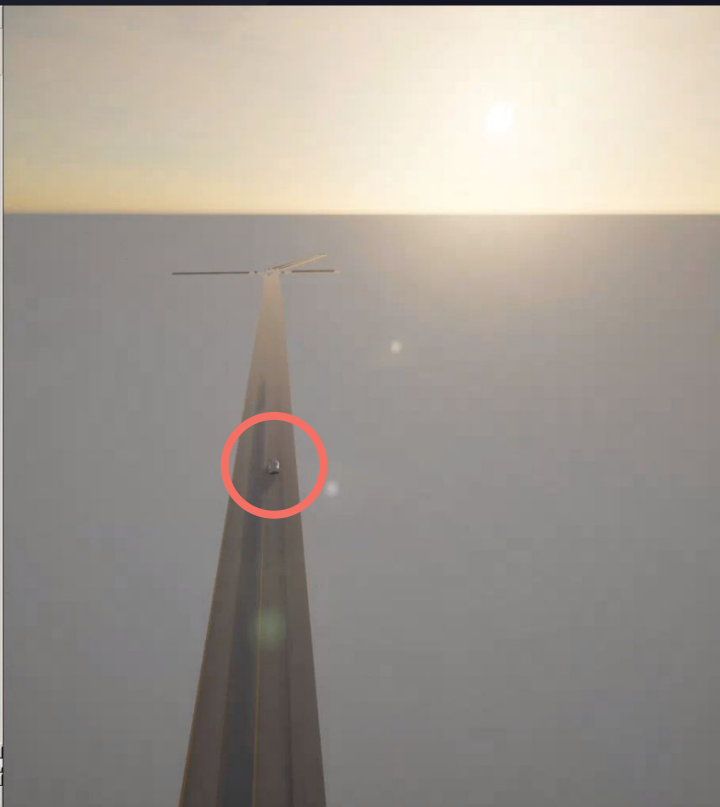
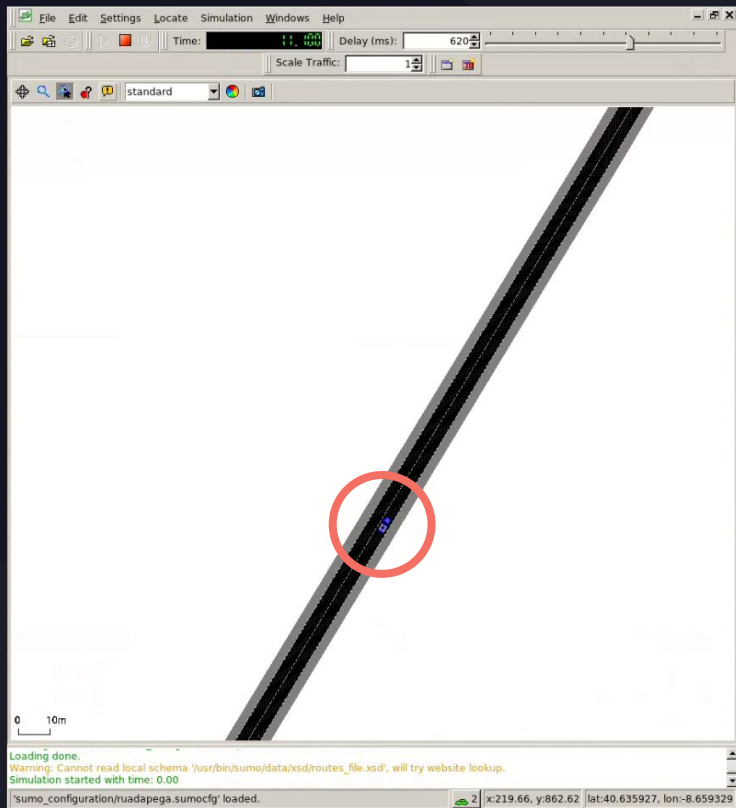


.xodr

EVOLUTION OF THE COVERAGE AREA



SUMO / CARLA INTEGRATION



INTEGRATION WITH THE INTERFACE



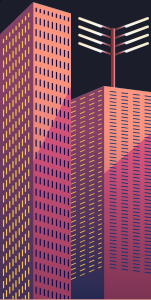
User management



Simulation of a car
with a specific route



Addition of massively
simulated data



USER MANAGEMENT



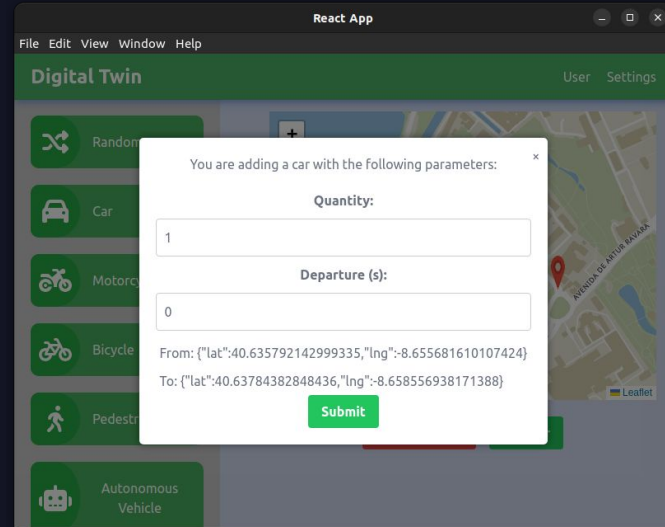
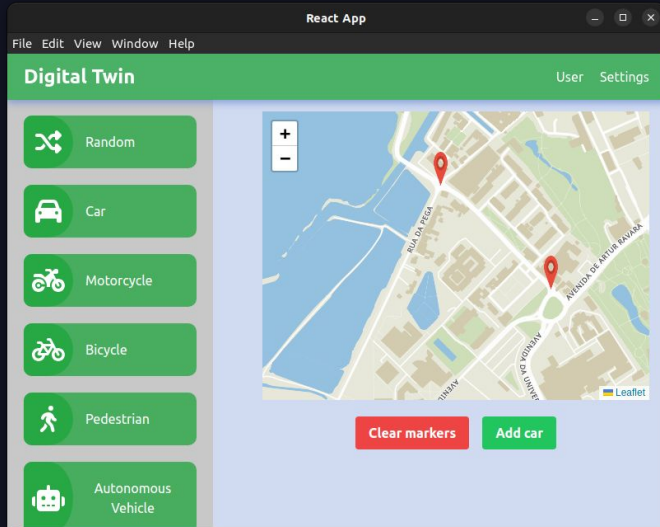
Allow the User to create an account in order to make simulations



Users can Login anytime they wish to make a new simulation

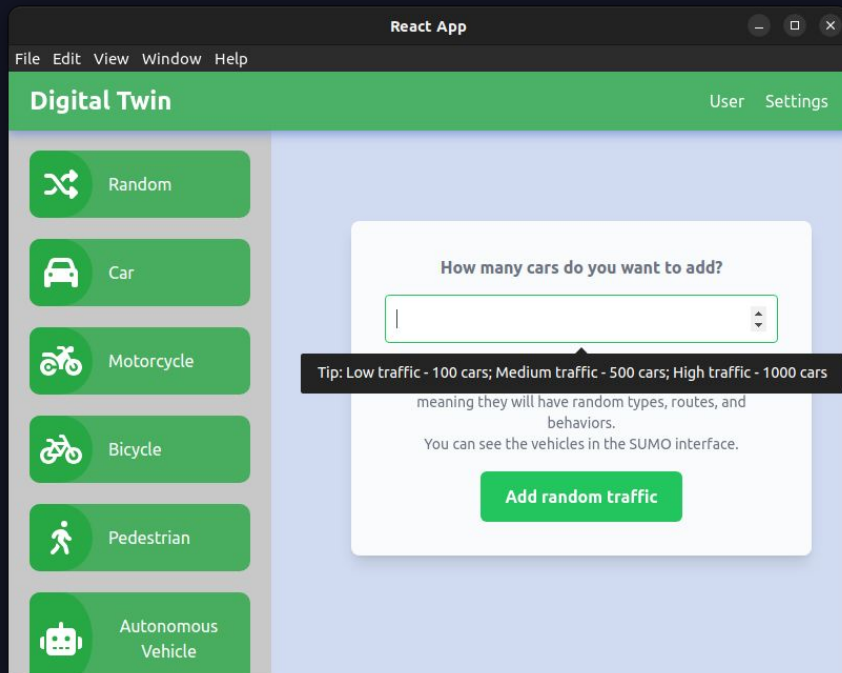


SIMULATED DATA PRODUCTION



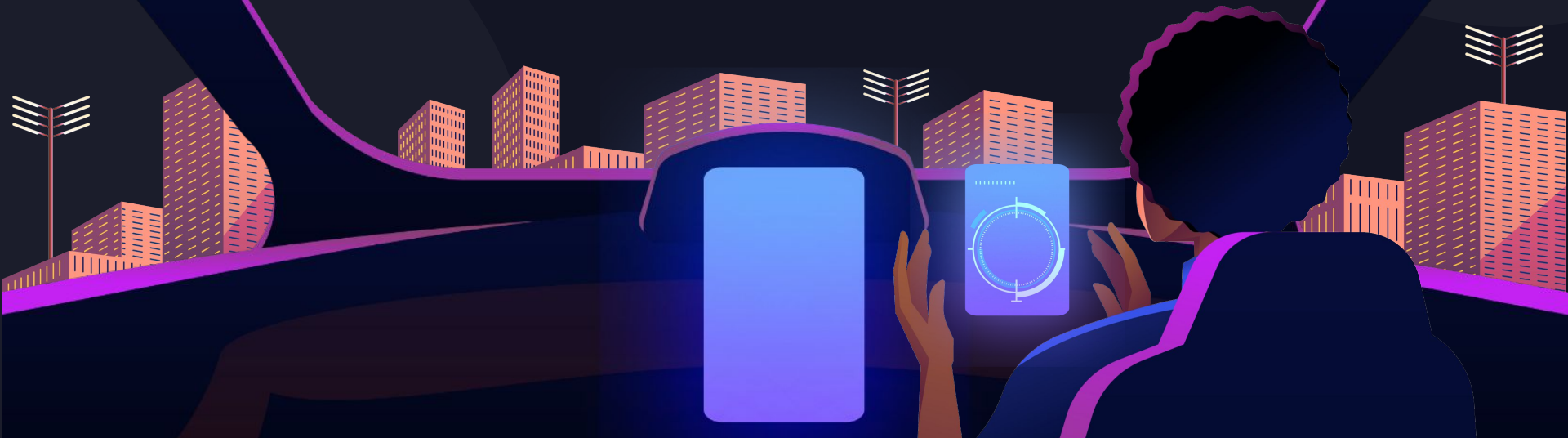
Interface under development

ADDITION OF MASSIVELY SIMULATED DATA

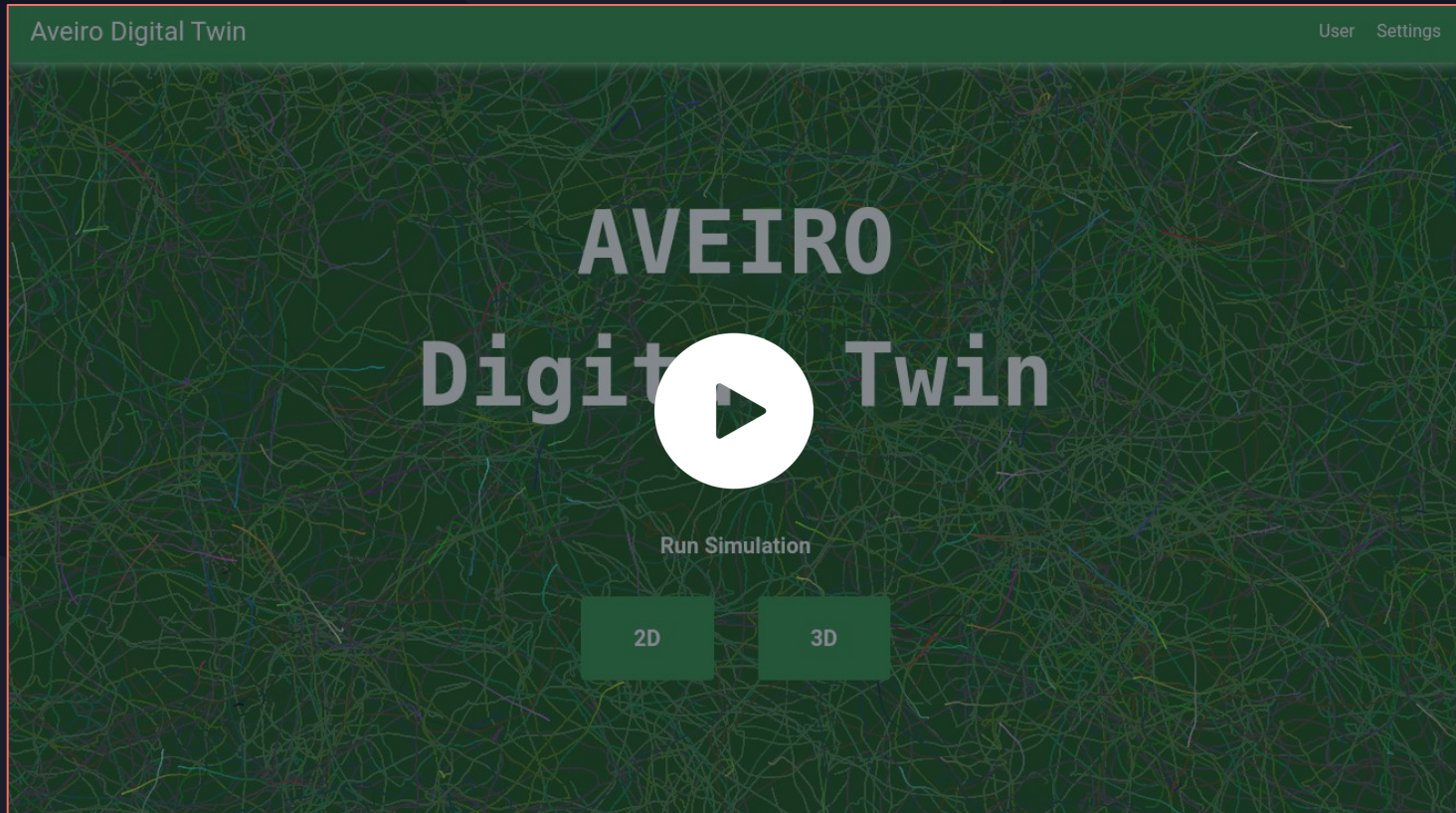


05

PROTOTYPE / DEMO



PROTOTYPE / DEMO



06

FUTURE WORK



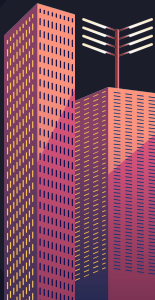
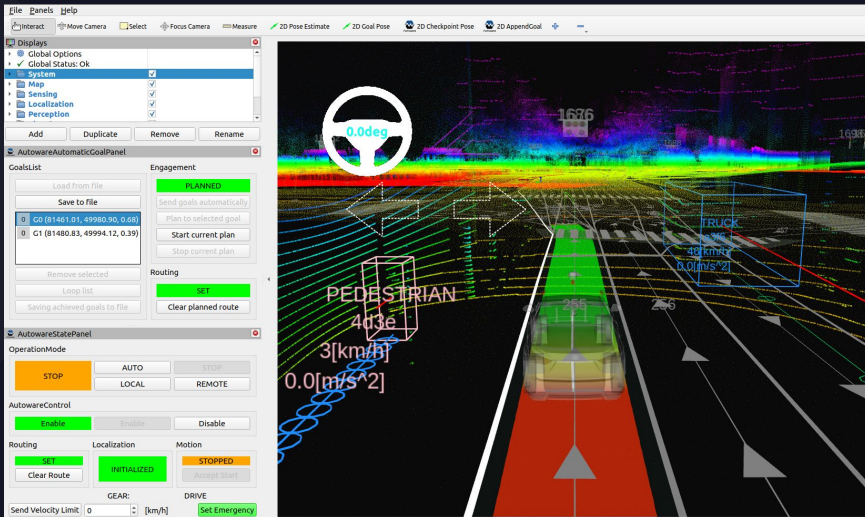
INTEGRATION WITH THE INTERFACE

1 Integration AUTOWARE
(Autonomous Vehicles)

2 Integrating real data
simulation with
simulated ones

3 Service containers

4 Collisions



Thanks!

Do you have any questions?

CREDITS: This presentation template was created by [Slidesgo](#), and includes icons by [Flaticon](#), and infographics & images by [Freepik](#)

